

Part number:

**HYDROMA**

HYDRAULICKÉ SYSTÉMY

**HIDROMA**  
SISTEMS

UKŁADY HYDRAULICZNE

**HYDROMA**

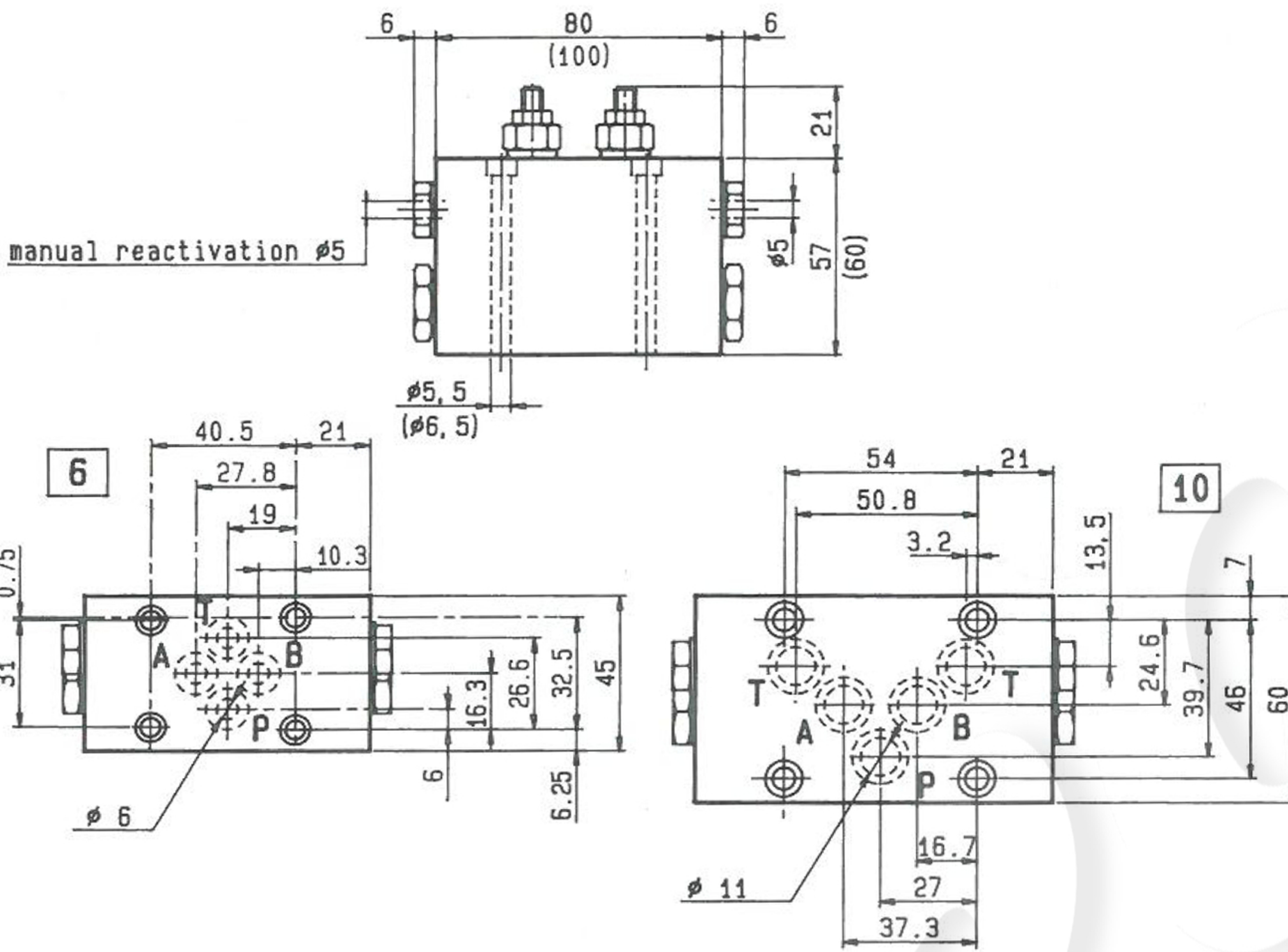
ГИДРАВЛИЧЕСКИЕ СИСТЕМЫ

**VDA**

DENOMINAZIONE VALVOLA  
VALVE DENOMINATION

**05.90.14 - X - Y - Z**

CODICE D'ORDINAZIONE  
ORDERING CODE



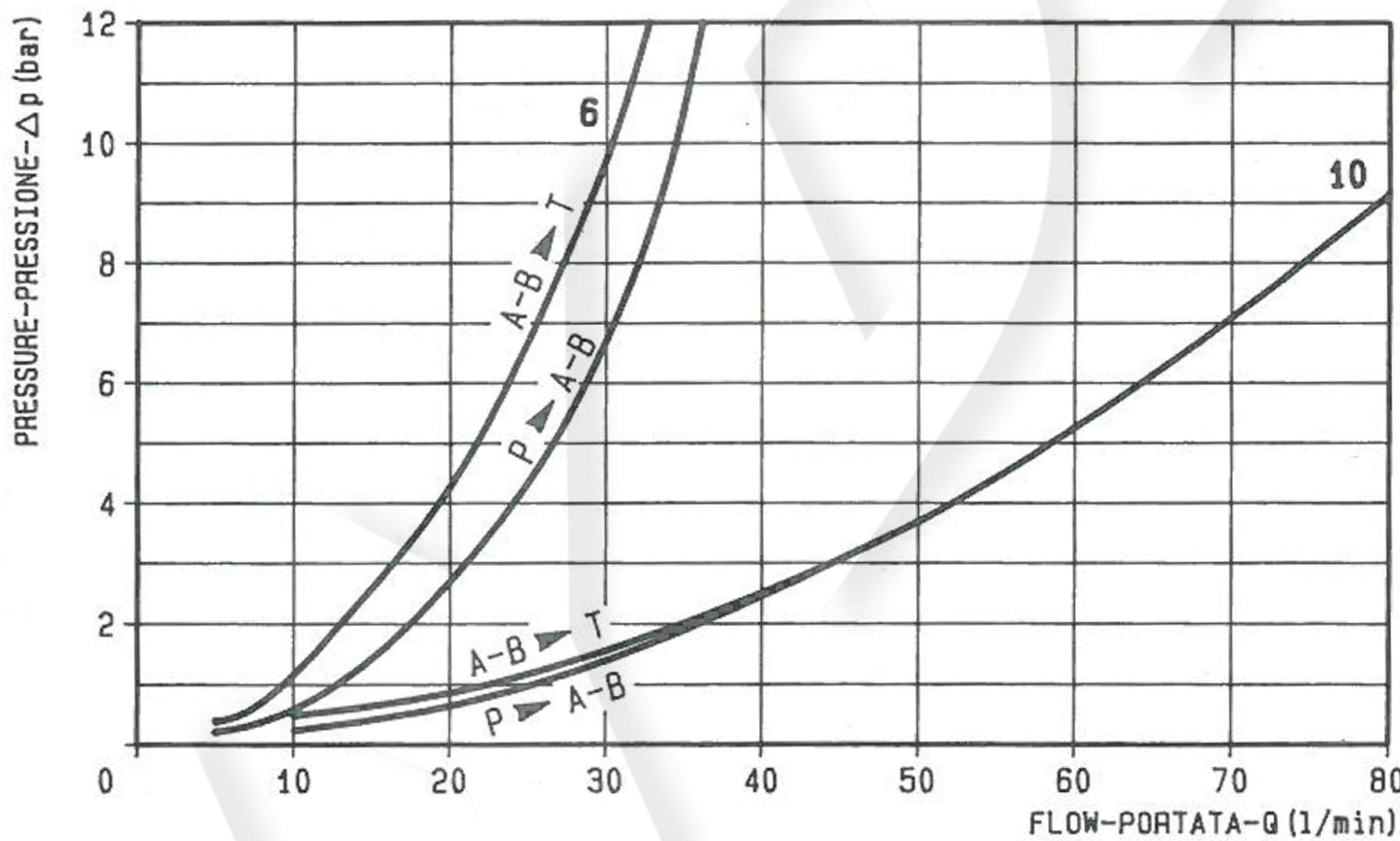
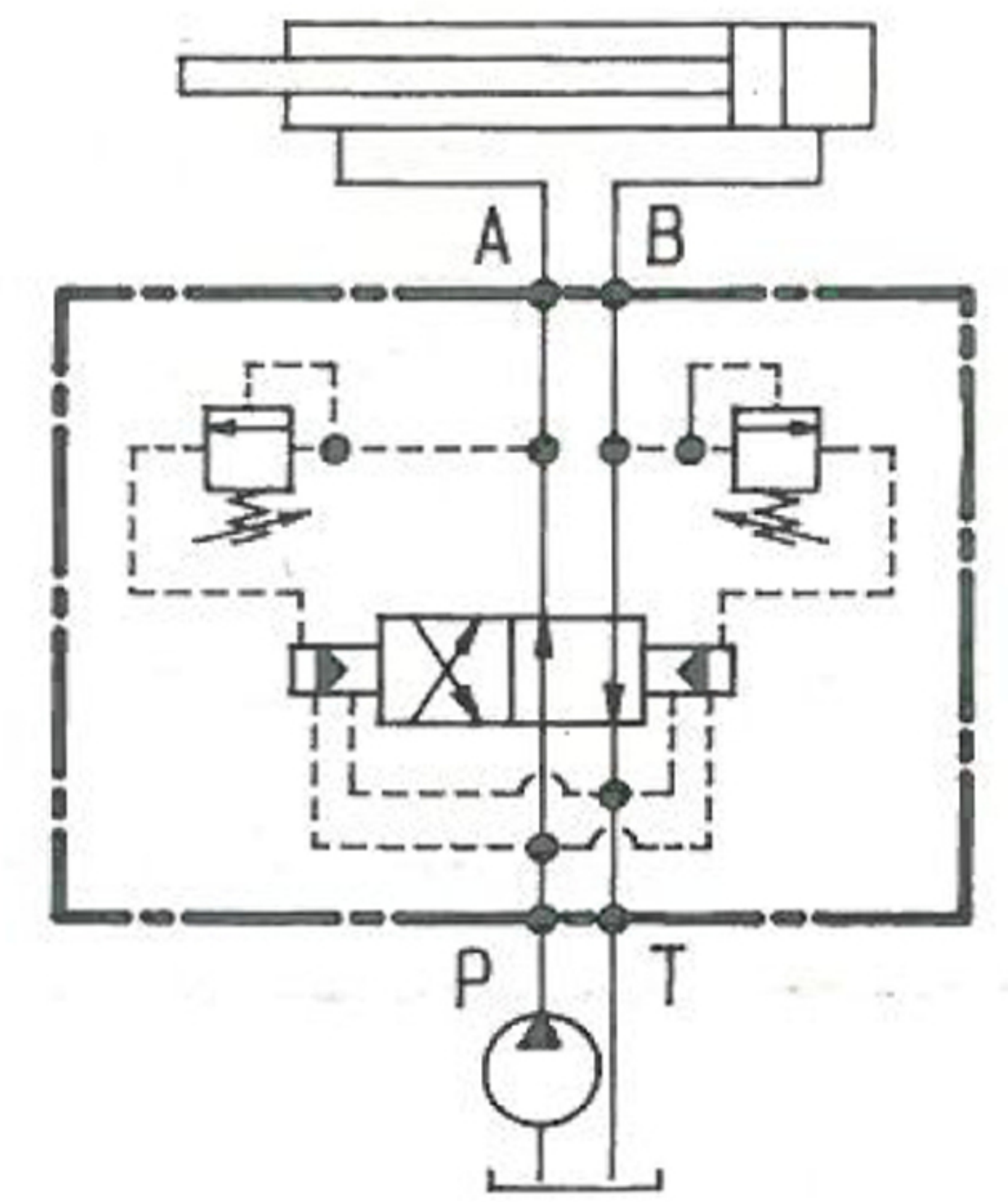
These valves provide automatic control of the flow direction in order to maintain continuous alternative motion of the actuator. The motion (flow) is reversed any time the line pressure reaches a pre-set level, independently adjustable in each of the two directions.

They are available with CETOP 3 (F6) and CETOP 5 (F10) flanges, both with high quality cast iron body.

For correct operation the main relief valve of the system should be adjusted at least 15% higher of the reversing pressure, and the pump flow should be at least 3 l/min. Filtration level: 25 micron or better.

Pressione di lavoro max  
350 bar  
Max working pressure  
350 bar

Peso  
Kg 1,42 (luce  $\phi$  6) - Kg 2,35 (luce  $\phi$  10)  
Weight  
Kg 1,42 ( $\phi$  6) - Kg 2,35 ( $\phi$  10)



X	REGOLAZIONI ADJUSTMENTS	
03	vite esterna esagono incassato leakproof hex. socket screw	

MOLLE - SPRINGS					
Z	Campo taratura min-max bar Adj.press. range bar	Incremento pressione bar/giro vite Pressure increase bar/turn	Taratura standard bar (Q=5 l/1') Std.setting bar (made at 5 l/1')	Codice ordinazione Ordering code	Colore Colour
10	15-100	25	100	03.51.01.120	blu blue
20	50-210	50	200	03.51.01.121	verde green
35	100-350	100	350	03.51.01.122	giallo yellow

Y		ATTACCHI / PORT SIZE
		A - B - P - T
29		CETOP 3 (F6)
43		CETOP 5 (F10)