

Part number:

**HYDROMA**

HYDRAULICKÉ SYSTÉMY

**HIDROMA  
SYSTEMS**

UKŁADY HYDRAULICZNE

**HYDROMA**

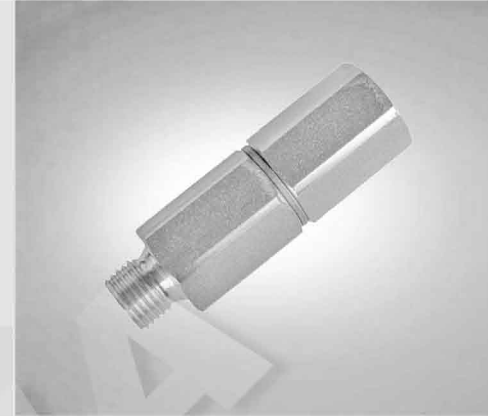
ГИДРАВЛИЧЕСКИЕ СИСТЕМЫ

RE 18316-01/10.09

1/2

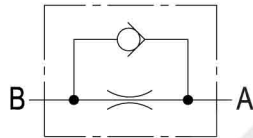
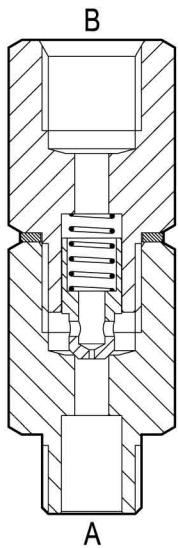
Flow control valves

Fixed orifice restrictor with reverse flow check



VF-MF

04.46.03.00-Y-Z



### Description

The "B-A" flow is restricted by a calibrated orifice, while flow "A-B" is always allowed through the incorporated check valve. Pressure compensation is not provided and flow depends from pressure drop and oil viscosity.

The valve is assembled with two hexagonal threaded sleeves and an internal check poppet. The drawing shows the valve with Male port A and Female port B: the two sleeves can be assembled in the reversed order and the result will be Female A port and Male B port.

### Technical data

Port	Pressure <b>P</b> max bar (psi)	Flow <b>Q</b> max l/min (gpm)	Weight kg (lbs)
G 1/4	350 (5000)	10 (3)	0.10 (0.22)

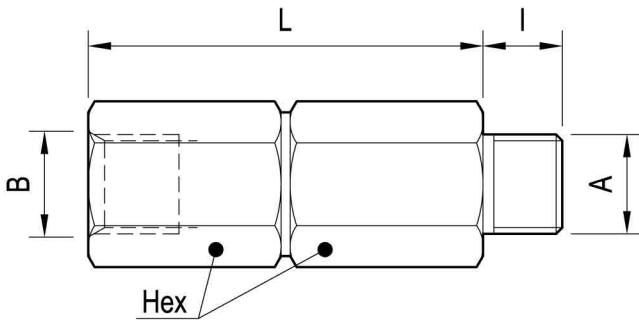
Steel body, zinc plated.

Installation torque: 33 - 37 Nm (24 - 27 ft-lb)

### Advantages

- Very compact design and inline mounting for space saving.
- Mounting position is unrestricted.

## Dimensions



The valve is only available with G 1/4 ports, with different size restriction orifices, as indicated by the table of orifices.

## Ports size / Dimensions

Y	Ports A-B	L mm (inches)	I mm (inches)	Hex mm (inches)
09	G 1/4	52 (2.05)	10.5 (0.41)	19 (0.75)

## Calibrated orifices

Z	09	06	00	07	10	12	11	03	08	05	01
Calibrated orifice Ø mm (inches)	0.3* (0.012*)	0.4 (0.016)	0.5 (0.020)	0.6 (0.024)	0.7 (0.028)	0.8 (0.032)	0.9 (0.035)	1.0 (0.039)	1.3 (0.051)	1.5 (0.059)	1.75 (0.069)

\* Hole Ø 0.5 mm (0.020 inch.) with Ø 0.4 mm (0.016 inch.) wire.

## Applications

In a variety of cases when a one-way restrictor is needed, especially for cushioning a control circuit (like servo-controls), or delaying brake engagement, etc.

- Control of delay for brake disengagement.
- Dampening of pressure peaks in joystick controlled lines.
- Simple and cost-effective solution for a one-way flow control.

## Ordering code

04.46.03.00 Y Z

Fixed orifice restrictor with reverse flow check

Calibrated orifices see table "Z"

Ports size / Dimensions see table "Y"

Type	Material number	Type	Material number	Type	Material number
04460300090000A	R930000645	044603000912000	R930000655		
04460300090100A	R930000646				
04460300090300A	R930000647				
04460300090500A	R930000648				
04460300090600A	R930000649				
04460300090700A	R930000650				
04460300090800A	R930000651				
04460300090900A	R930000652				
04460300091000A	R930000653				
044603000911000	R930000654				